

Professional Colour Laser Printer

Robust, high-quality,
and responsibly designed

Meet the MFC-L8730CDW. Engineered for performance in a compact, eco-friendly design. With fast print and scan speeds, seamless connectivity, and strong security features, it's built to simplify workflows and enhance productivity - without taking up valuable space.

MFC-L8730CDW

Key features

- Print or Copy up to 31ppm
- 2-Sided Print or Copy, up to 20 sides per minute
- Dual-band WiFi (2.4GHz and 5GHz)
- Gigabit ethernet
- 250 Sheet paper tray
- 50 Sheet Multi-Purpose input tray
- Auto paper low/empty detection
- 3,000 black, 1,800 colour page yield toners
- Available under a Managed Print Service (MPS) contract



PRINT



SCAN



COPY



FAX



WIRELESS

FPOT
Less than
9.9 Seconds

2-SIDED
Scan up to
56ipm

NFC
Secure
Authentication

Sustainability

Reducing our environmental impact

- Increase printer life and reduce downtime with easy to replace parts
- 100% EPS-free packaging for easy recycling
- Design and built to be remanufactured
- Made with up to 12% recycled plastic²⁷
- Up to 31% reduction in Typical Energy Consumption (TEC)²⁶
- Up to 12% reduction in CO₂ emissions²⁸
- Blue Angel certified for meeting high environmental standards



Workflow

Built for business efficiency

- Monitor and control your Brother fleet with network-based management tools
- Boost efficiency with high-speed scanning for faster document processing

Productivity

Reliable performance, made to last

- Robust design, built for demanding businesses
- High-yield toners keep you printing without interruptions
- Keep printing for longer with scalable paper capacity
- Streamlined design, up to 25% smaller than previous model



Secure by design

Device Security

Your device protects your business by minimising attack surfaces through:

- Secure user access via LDAPS, Active Directory, and NFC authentication
- Controlled privileges using Secure Function Lock and Setting Lock
- System integrity ensured by intrusion detection, Secure Boot, and digitally signed firmware

Network Security

Your network is protected with flexible, industry-standard tools including:

- Intrusion protection through protocol control, interface restrictions, and IPv4 filtering
- Secure connections via IEEE 802.1X for enterprise wired and wireless networks
- Encrypted communication using TLS, SSH, IPSEC, HTTPS, and SNMPv3
- Centralised management with Device Master Settings, BRAdmin Pro 4, and Mass Deployment Tool
- Syslog reporting for seamless real-time SIEM integration

Document Security

Your documents are protected through:

- Encrypted transfer via IPPS/HTTPS for printing and TLS, HTTPS, SFTP for scanning
- Non-persistent memory, ensuring data is wiped after each job or reboot
- Secure print release, so documents only print when you're ready to collect them
- 3rd party integration via Brother Solutions Interface (BSI), to streamline workflows

Brother MPS

Printing made simple with Brother MPS

Managed print services (MPS) supports you to get the best out of your devices. Whatever your printing needs, we'll be "At your side" to find the solution that simplifies printer admin, saves time, keeps costs down, and helps you stay productive.

Benefits include:

- No long-term commitments
- Ink and toner delivery before you run out
- Quick breakdown support
- Easy supplies recycling



Supplies

Toners



TN625 (inbox)

3,000 BK, 1,800 CMY

TN625XL

5,500 BK, 4,500 CMY

TN625XXL

7,500 BK, 6,500 CMY

Accessories

Trays & cabinet

LT-350CL

250 Sheet Lower Tray

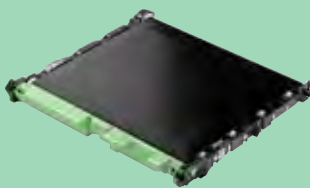
ZUNTBC4FARBLASER

Floor Standing Cabinet

Replaceable parts



Drum Unit
DR625CL



Belt Unit
BU635CL

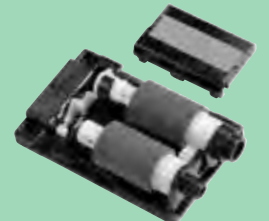


Waste Toner Box
WT229CL



Fuser Unit
FD-5000

Paper Feed Kit
for MP Tray
PF-M5000



General

Technology

Electrophotographic (Laser)

Laser Classification

Class 1 Laser Product

Memory

512MB internal

Processor

1200 MHz

Control Panel

8.8cm (3.5") Colour
Touchscreen LCD

Local Interface¹⁸

Hi-Speed USB 2.0,
USB 2.0 Host (Front)

Wired Network interface

GigE (10Base-T/100Base-
TX/1000Base-T)

Fax Interface

Telephone Line port
External Telephone Answering
Device port (TAD)

Configurable Shortcuts

Add, delete, change up to 48
personalised shortcuts for quick
and secure access to device
functions

Wireless Network interface

2.4GHz: IEEE 802.11b/g/n
5GHz¹⁷: IEEE 802.11a/n
(Infrastructure Mode),
Vertical Pairing

Wi-Fi Direct[®]

Print wirelessly without having
to use a wireless access point
(both automatic and manual
methods supported)

Print^{9,24}

Print Speed (A4)

Up to 31ppm
(pages per minute)

Print Speed 2-Sided (A4)

Up to 20 sides per minute
(10 sheets per minute)

Resolution

2,400dpi (2,400 x 600dpi),
600 x 600dpi
(Horizontal x Vertical,
dots per inch)

FPOT

(First Print out Time)

Less than 9.9 seconds from
ready mode and standard tray

Warm up Time

Less than 15.1 seconds from
sleep mode

Driverless Printing Compatibility

Windows Modern Print Platform Ready

Supports seamless, driverless
printing via IPP for instant setup
on Windows 10 (21H2+) and
Windows 11 devices

Mopria

Print common file types
from supported Android
mobile devices and Windows
computers

Apple AirPrint

Print common file types from any
AirPrint enabled application

ChromeOS™

Supports Work with
Chromebook printing

Our printers support driverless printing across Windows, macOS, iOS, and Android devices for instant, secure, and hassle-free setup

Printer Functions

Direct Print

Print directly from the front USB host port using a USB flash memory drive. Supported formats include; PDF 2.0, JPEG, TIFF (scanned using Brother model)

Print Complete Notice

A notification can be set to go to your computer when printing

Manual 2-Sided Print^{4,25}

Manual 2-sided printing recommended for media not supported by automatic 2-sided print

Carbon Copy⁴

Prints additional copies of the same document to paper taken from additional paper trays

Header Footer Print^{3,25}

Add the date, time, login user name, or custom text to the top or bottom of each printed page

Skip Tray¹⁹

Configures your paper tray selection to avoid specific trays/media for regular printing

N-up Printing³

Reduce up to 2, 4, 9, 16 or 25 A4 pages into just one A4 page, Mac (Airprint) up to 2, 4, 6, 9, or 16

Poster Printing^{4,25}

Enlarge 1 A4 page into a poster using 4, 9, 16 or 25 A4 pages

Watermark Printing^{3,25}

Watermark your documents with predefined or user-defined text

Secure Print³

Protect print jobs with a release code required at the device in order for them to be printed

Reverse Print^{4,25}

Rotate the content of a printed document by 180°

Paper Handling

Paper Input²

Standard (Tray 1)

250 Sheets

Multi Purpose Tray

50 Sheets, 10 Envelopes

Automatic Document Feeder (ADF)

80 Sheets

Paper Output²

150 sheets face down

1 sheet face up (straight path)

Media Sizes

Standard (Tray 1)

Letter, Legal, Executive, A4, A5, A5 (Long Edge), A6, Mexico Legal, India Legal, Folio, 16K (195 x 270mm)

Multi Purpose Tray

Width: 76.2mm - 216mm

Length: 116mm - 355.6mm

Envelopes; C5, Com-10,

DL, Monarch

Optional Trays

Letter, Legal, Executive, A4, A5, Mexico Legal, India Legal, Folio, 16K (195 x 270mm)

Automatic Document Feeder (ADF)

Width: 105 - 215.9mm

Length: 148 - 355.6mm

2-sided Print

A4

Media Weights

Standard (Tray 1)

60 - 105gsm

Multi Purpose Tray

60 - 163gsm

Optional Trays

60 - 105gsm

Automatic Document Feeder (ADF)

60 - 105gsm

Media Types

Standard (Tray 1)

Thin Paper, Plain Paper, Thick Paper, Recycled Paper

Multi Purpose Tray

Thin Paper, Plain Paper, Thick Paper, Recycled Paper, Bond Paper, Label, Envelope, Env. Thin, Env. Thick, Glossy Paper²⁰

Optional Trays

Thin Paper, Plain Paper, Recycled Paper

Auto 2-Sided Print

Thin Paper, Plain Paper, Thick Paper, Thicker Paper, Recycled Paper, Glossy paper

Automatic Document Feeder (ADF)

Thin Paper, Plain Paper, Recycled Paper

Paper Input Sensors

Onscreen and optional email alert notifications when input trays are empty or running low

Copy¹⁰

Copy Speed (A4)

Up to 31 cpm
(copies per minute)

Copy Speed 2-Sided (A4)

Up to 20 sides per minute
(10 sheets per minute)

FCOT

(First Copy Time Out)

12.5 seconds from ready mode
and standard tray

Resolution

Print up to 1,200 x 600dpi
(Horizontal x Vertical, dots
per inch)

Copy Functions

Multi-Copying

Ensures that your copies are
organised in the correct order,
making it easier to manage large
documents. Makes up to 999
copies of each page

Enlargement/Reduction Ratio

Reduce or Increase document
sizes from 25% to 400% in
1% increments

N in 1 Copying

Allows the user to compress 2 or
4 pages on to a single A4 sheet

Automatic 2-Sided Copying

Scans and copies documents
using the Automatic Document
Feeder (ADF)

Scan

Scan Speed Standard (A4)

Colour and Mono (2 Sided)¹¹
Up to 56ipm
(images per minute)

Optical Scan Resolution

ADF Up to 600 x 600dpi
Flatbed Up to 1,200 x 1,200dpi
(Horizontal x Vertical,
dots per inch)

Interpolated Scan Resolution²²

Up to 19,200 x 19,200dpi
(Horizontal x Vertical, dots per
inch)

Scanner Type

Dual CIS (Contact Image Sensor)

Colour Depth

48 bit colour Processing (Input)
24 bit colour Processing (Output)

Grey Scale

256 levels (8 bit)

Scanner Functions

Windows⁵

TWAIN & WIA

Macintosh²³

AirPrint Scanning
macOS 10.14.x or greater

Linux⁵

SANE (32 & 64 bit editions)

Machine File Formats

Including PDF (PDF/A, Secure PDF, Signed PDF, High Compression PDF, Multi-page PDF), JPEG, TIFF

Standard Machine Functions⁷

Scan to USB, E-mail, OCR, Image and File

Network Scanning

Scan to network folder (SMB)⁴, SFTP, FTPS, Email Server, HTTPS, SharePoint (on premise)

Machine Scanning Features

Auto Deskew from ADF, Background Colour Drop, Auto Crop, Blank Page Removal

Scan Profile

Create up to 25 preset network profiles for an easy way to store multiple scan settings

Direct Scan

Scan directly to a USB flash memory storage

ChromeOS™

Supports integrated Chrome OS scanning functionality

Scan Preview

The contents of Scan to FTP, Network, Email Server, HTTP, Sharepoint (on premise) can be checked before sending to destination

Scan Margin

Setting the scan margin to 0mm removes the default 3mm margin, allowing the scanned image to capture the entire document without any border

Document Separation

Create scanned files based on blank sheet separation or a specific number of single sided images or sheets of paper, even if more documents are set on the ADF

Fax

Fax Modem

33,600bps (Super G3)

Transmission Speed

Approx. 2.5 sec (ITU-T TestChart Document No.1, Std resolution, JBIG) Quick-Scan Approx. 1.82 sec/page

Fax Send Resolution

Std resolution 203 x 98dpi up to 203 x 392dpi (Horizontal x Vertical, dots per inch)

Automatic 2-Sided Faxing

Scans and faxes documents using the Automatic Document Feeder (ADF)

Grey Scale

256 shades (8 bit) of grey are available for faxing

Memory Transmission | Out of Paper Reception

Up to 500 pages (ITU-T Test Chart, Standard Resolution, JBIG)

Compression Methods

Ranging from basic to advanced with MH, MR, MMR, JBIG

Fax Functions

PC-Fax Send⁷ and Receive^{4,7}

Send and Receive black & white faxes directly from your PC

Internet Fax (I-Fax)

Fax documents over the internet as an email TIFF attachment

Fax to Server

Scan a document and send it over the network to a separate fax server

Automatic Redial

Automatic redialling if the recipient fax is busy

Telephone Index

An electronic, alphabetical listing of stored speed dials and group numbers

Chain Dialing

Allows the user to store parts for long dialing sequences in different speed dial locations

Dial Restriction

Restrict number dialing to prevent unauthorised or accidental outbound calls

Distinctive Ring Detection

An external service for UK and Denmark that allows two or more telephone numbers shared on a single fixed line and use different ring tones

Error Correction Mode

ECM detects line errors during fax transmission and resend the page(s) of the document that had an error (recipient machines must share this feature for it to work)

Batch Transmission

Stores documents for the same location in the machines memory for transmission in a single call

Auto Reduction

When receiving a single page document longer than A4 (297mm) the fax machine will automatically reduce the message to fit onto a single A4 sheet

Broadcasting

Send the same fax message up to 350 locations (manual 50 locations)

Fax Forwarding

Sends a fax received in memory to another pre-programmed fax number

Remote Retrieval

Allows users to remotely access their machine and retrieve stored fax messages

Fax Stamp

Add the date and time to all received faxes

Cover Page

Create custom cover pages for outgoing faxes

Station ID

An ID and fax number will be printed as the header of every fax sent

PBX

Enables seamless fax operation in office environments by supporting PBX phone systems

Connectivity

Mobile Connect

Use a Brother app to Print from and scan to a mobile device running iOS or Android operating system

Brother Print Service Plugin⁵

Print from Android devices without a dedicated App

Microsoft Universal Print

Organisations can manage their brother print infrastructure through cloud services from Microsoft

Alexa Print¹⁷

Print using Echo device and printer connected to the same network

Brother Apps¹²

Cloud Secure Print, Scan to; mobile, Searchable PDF, Microsoft PowerPoint, Word, Excel, Easy Scan to email, and Fax Forward to Cloud/Email

Web Connect^{12,16}

Without a PC you can download to print and upload from scan and fax for Box, Microsoft SharePoint Online, Dropbox, Evernote, OneDrive, Google Drive™, OneNote

Email Print^{12,16}

Enables driverless printing via email

Fleet Management Tools⁵

BRAdmin⁴
LAN/WAN management software

Clone Device Settings
Copy settings and configurations from one machine to another via a USB flash drive

Auto Pull Configuration
The device periodically checks an encrypted settings file on a network location. If the device has been changed the file is used to change back to the desired state configuration

Embedded Web Server
Using the IP address or node name of your device access via USB or network via a web browser to the web based print management software embedded onto the device using a randomly encrypted password

Mass Deployment Tool
Provides a configuration interface to help manage and deploy device settings.

Software⁵

Brother iPrint&Scan
Print from, scan to, preview copies and check the machine status from Windows or macOS PC using Brother software

Print Support App⁴
As an alternative to Windows Modern Print this method enhances compatibility and ease of use by enabling printing without traditional printer drivers, making it a versatile and efficient solution for modern printing needs accessible through the Microsoft Store

Visit: support.brother.com for the full list of supported OS and to download the latest software
All trademarks, brand and product names are property of their respective companies

Legacy Printer Drivers²⁴

PCL Driver⁴
Generic PCL XL driver

Universal Printer Driver⁴
BR-Script3 Driver that enables printing to any network or locally connected Brother laser printer that supports PostScript

Print Languages
PCL6, BR-Script3

Embedded Fonts (PCL)
73 scalable fonts, 12 bitmap fonts

Embedded Fonts (BR-script)
66 scalable fonts

Embedded Barcodes (PCL)
16 bar codes fonts - Code39, Interleaved 2 of 5, FIM (US-PostNet), Post Net (US-PostNet), EAN-8, EAN-13, UPC-A, UPC-E, Codabar, ISBN (EAN), ISBN (UPC-E), Code128 (set A,B, C), EAN128 (set A,B,C), Code93, GS1Databar, MSI

Linux
Printer Driver (Linux, CUPS, LPD/LPRng)

Network Security

Wired Network Security

APOP, SMTP-AUTH, SSL/TLS (IPP, HTTP, SMTP, POP3, IMAP4, FTP, LDAP), SNMP v3, 802.1x (EAP-MD5, EAP-FAST, PEAP, EAP-TLS, EAP-TTLS), OAuth(SMTP, POP3, IMAP4), Kerberos, IPsec

Wireless Network Security

WEP 64/128 bit, WPA-PSK (TKIP/AES), WPA2-PSK (TKIP/AES), WPA3-SAE (AES), APOP, SMTP-AUTH, SSL/TLS (IPP, HTTP, SMTP, POP3, IMAP4, FTP, LDAP), SNMP v3, 802.1x (EAP-FAST, PEAP, EAP-TLS, EAP-TTLS), OAuth (SMTP, POP3, IMAP4), Kerberos, IPsec Wi-Fi Protected Setup® (WPS)¹³

IPv4

ARP, RARP, BOOTP, DHCP, APIPA (Auto IP), WINS/NetBIOS name resolution, DNS Resolver, mDNS, LLNMR responder, LPR/LPD, Custom Raw Port/Port9100, POP3, SMTP Client, IPP/IPPS, FTP Client and Server, CIFS Client, TELNET Server, SNMPv1/v2c/v3, HTTP/HTTPS server, TFTP client and server, ICMP, Web Services (Print/Scan), SNTP Client, LDAP, LDAPS, IMAP4, Syslog

Display IP Address

The dynamic IP assigned to your device can be displayed on the home screen

IPv6

NDP, RA, DNS resolver, mDNS, LLNMR responder, LPR/LPD, Custom Raw Port/Port9100, IPP/IPPS, POP3, SMTP Client, FTP Client and Server, CIFS Client, TELNET Server, SNMPv1/v2c/v3, HTTP/HTTPS server, TFTP client and server, ICMPv6, Web Services (Print/Scan), SNTP Client, LDAP, LDAPS, IMAP4, Syslog

IP Filter

Restrict which network users can or cannot access the device over the network

Security Features

E-mail Notifications

Automatically have the device send e-mail alerts when it requires attention, such as when the toner is low or needs replacing

E-mail Reports

Receive usage reports on a regular basis via e-mail

Secure Boot

All Brother Print devices are secure by design. Devices automatically recognise security attacks and take preventative measures, including rebooting where necessary, in order to ensure the device remains secure

Digitally-signed Firmware

The firmware for Brother Print & Scan devices is digitally signed and secure

Active Directory/LDAP Authentication

Utilise existing infrastructure to restrict access to Brother devices using AD/LDAP. Staff can easily use their existing network login credentials to authenticate

Port-based Network Access Control

(IEEE 802.1x)
Brother devices are in full compliance with this standard, to allow connection to an 802.1x EAP (Extensible Authentication Protocol) protected network

Restrict network protocols

The network access control feature allows an administrator to restrict communication protocols (e.g. FTP, Telnet) as required

Setting Lock

Secures access to the devices control panel by locking it

Secure Function Lock 3.0

Use a 4 digit pin or a password to identify and authenticate an individual or groups of users over a network. Allows access control with username for up to 200 users

Cloud Secure Print¹²

Enables password protected driverless print job release

Store Print Log

Allows audit of a print log file saved to CIFS server. Record ID, type, name, user, date, time, page count for every print job

Firmware Updates

In addition to allowing automatic updates to the latest version the printer can be set to not receive older firmware versions to avoid downgrade by an unauthorised user

SysLog

Allows IT Admin to access a single application (SIEM tool) to get device status updates for audit purposes over Syslog

Secure Key Management

Use the default standard self-signed, create a custom self-signed certificate, certificate signing request (CSR), or import certificate & private key for protected network communication (Type: RSA Max size: 4,096 bit)

Near-Field Communications

NFC Card Reader

Supports secure user authentication via NFC card reader for access control, and enables personalised workflows through NFC Shortcut configuration. Third-party card reader support requires additional purchase and can be connected to the front USB host and registered via the embedded web server

Integrated support for NFC

include: (ISO14443 Type A) MIFARE Standard / Plus / Ultralight / Ultralight C / DESfire / my-d move (ISO15693 Type B) Tag-it

External NFC Card Reader Support

RFIDeas pcProx Enroll - RDR-6081AKU; RDR-6281AKU; RDR-6381AKU; RDR-6E81AKU; RDR-6H81AKU
RFIDeas AIR ID Enroll - RDR-7081AKU; RDR-7581AKU; RDR-7F81AKU
Elatec - TWN3 MIFARE; TWN3 MIFARE NFC; TWN3 Multi ISO; TWN4 MIFARE NFC

Address Book

Speed Dials

300 locations for E-mail addresses and fax numbers

Group Dial

A combination of up to 20 groups can be stored

LDAP

The ability to connect to an external LDAP enabled address book, like Microsoft Exchange

Developers

Brother Solutions Interface (BSI)

Create powerful cloud and on premise solutions directly integrating the advanced print, scan and security capabilities of Brother devices. For more information visit: www.brother.eu/developers

Supplies¹, Upgrades and Accessories

Inbox Toner

3,000 pages (BK)
1,800 pages (CMY)

Standard Toner

TN625
3,000 pages (BK)
1,800 pages (CMY)

High Yield Toner

TN625XL
5,500 pages (BK)
4,500 pages (CMY)

Super High Yield Toner

TN625XXL
7,500 pages (BK)
6,500 pages (CMY)

Drum Unit

DR625CL approx 50,000 pages at 3 pages per job

Belt Unit

BU635CL approx. 100,000 pages at 3 pages per job

Waste Toner Box

WT229CL approx 50,000 pages at 5 pages per job

Fuser Unit

FD-5000 approx 100,000 pages at 5 pages per job

Paper Feed Kit for MP Tray

PF-M5000 approx 50,000 pages at 5 pages per job

Carton Contents

Machine, Inbox Toners, Drum, Belt, Waste Toner Box, Fuser, PF Kit, Power Supply Cord, Quick Set-Up Guide, Warranty Card, (PC interface cable NOT included)

Filter Holder

FH-3000 (Germany Only)

Optional Paper Trays²

250 sheet tray (LT-350CL)
Maximum combinations of up to 2 x LT-350CL

Optional Cabinet

ZUNTBC4FARBLASER Brother professional colour laser floor standing printer cabinet

Dimensions and weights (WxDxH)

Printer w/o Carton

404 x 473 x 460mm - 25.6kg
inc. TN/DR/WT/BU/FD/PF

Printer with Carton

650 x 560 x 643mm - 33.5kg

Optional Paper Trays

250 sheet tray:
404 x 446 x 100mm - 3.25kg

Optional Cabinet

410 x 484 x 400mm - 10kg

Duty Cycle

Recommended Monthly

Up to 5,000 pages monthly
print volume

Maximum Monthly⁶

Up to 60,000 pages monthly
print volume
Up to 5,000 pages monthly
scan volume

Environment

Power Requirement

AC 220-240V, 50/60Hz

Power Consumption¹⁴

Printing - 540W
(330W in quiet mode)
Copying - 540W
(330W in quiet mode)
Ready 60W
Sleep 8.4W
Networked Standby 7.8W
Deep Sleep 0.53W
Power Off 0.04W

Sound Pressure¹⁵

Printing: 49dbA
Quiet Print Mode: 44dbA
Default Ready: 31dbA

Sound Power¹⁵

Printing: 6.47BA
Quiet Print Mode: 5.88BA
Default Ready: 4.43BA
Deep Sleep: 3.38BA

TEC Value

0.43 kWh/Week

Eco Mode

With seamless functionality the eco control system of the printer is designed to ensure lower noise levels, consume less energy when not in use and optimise toner usage which all help to reduce the total cost of ownership

Operating Environment

Humidity 20 - 80%
Temp 10° - 32.5° centigrade
50° - 90.5° fahrenheit

Storage Environment

Humidity 35 - 85%
Temp 0° - 40° centigrade
32° - 104° fahrenheit

Computer Platforms

Windows

Windows 11
(Home|Pro|Education|Enterprise)
Windows 10
(Home|Pro|Education|Enterprise)
(32 or 64 bit editions)
Windows Server
2025, 2022, 2019, 2016

Linux

Supported Package
management System:²³
dpkg, rpm

Macintosh²¹

macOS 13 or greater

ChromeOS™

Compatible with Chromebooks, including "Works with Chromebook" certified printing support and integrated Chrome OS scanning functionality

Visit: support.brother.com for the full list of supported OS and to download the latest software

Disk Space Requirements

80MB Windows drivers
only, 2GB Windows 11, 10,
applications inc drivers

500MB - macOS applications

20MB - Linux drivers only

Certification

Blue Angel

Nordic Swan

GS Mark

Wi-Fi CERTIFIED:

Wi-Fi Direct, Wi-Fi Protected Setup, WPA3™ - Enterprise, Personal

Mopria Certified

Ensures universal compatibility for driverless printing across Windows, Android, and compatible mobile operating systems

AirPrint

1. Approx declared toner yield value in accordance with ISO/IEC 19798. 2. Calculated with 80gsm sheets of paper. 3. Windows & macOS. 4. Windows only. 5. Free download from the Brother Solutions Centre <http://solutions.brother.com> 6. Number of printed pages per month can be used to compare designed durability between Brother products. For maximum printer life, it is best to choose a printer with a duty cycle that exceeds your print requirements. 7. Requires Brother Software. 8. Based on ISO/IEC 24734. 9. Based on ISO/IEC 17629. 10. Based on ISO/IEC 24735. 11. Based on ISO/IEC 17991. 12. Requires an Internet connection. 13. Wi-Fi Direct supports WPA2-PSK (AES) only. 14. Measured according to IEC 62301 Edition 2.0. All values are approximate; power consumption varies depending on the usage environment or part wear. 15. Based on ISO 7779. 16. Requires additional activation. 17. May not be available in your region. 18. Third Party USB hubs not supported. 19. Requires installation of optional trays. 20. Set only a single sheet. 21. On macOS AirPrint only. 22. For WIA, 1200 x 1200 resolution. Brother Scanner Utility enables to enhance up to 19200 x 19200 dpi. 23. Red Hat Enterprise Linux 8.6 64bit, Red Hat Enterprise Linux 9.1 64bit, Fedora 39 64bit, Mageia 9 32bit, Mageia 9 64bit, openSUSE 15.5 64bit, SUSE Enterprise15-SP4 64bit, Debian 12.2.0 32bit, Debian 12.2.0 64bit, Ubuntu MATE 18.04 32bit, Ubuntu 22.04 64bit, Ubuntu 23.10 64bit, Linux Mint 21.2 64bit, Ubuntu 24.04 64bit. 24. Microsoft is transitioning towards driverless printing as the preferred standard. Legacy driver installations remain supported for customers with existing deployment requirements. 25. Advanced settings via legacy driver or the Print Support App only. 26. Compared to Brother's previous equivalent model. 27. Figure based on Brother's internal analysis at the time of publication. Figures may fluctuate depending on manufacturing methods and the availability of materials. 28. These results are based on Brother's internal calculations, compared to previous equivalent model. The CO₂ emissions scope covers C1 (Purchased goods and services), C11 (Use of sold products), and C12 (End-of-life treatment of sold products). Exact values may vary depending on country or region, manufacturing methods and the availability of materials.



brother
at your side



Working with you for a better environment

At Brother, our green initiative is simple. We strive to take responsibility, act respectfully and try to make a positive difference to help build a society where sustainable development can be achieved. We call this approach Brother Earth.

www.brotherearth.com

All specifications correct at the time of printing and are subject to change. Brother is a registered trademark of Brother Industries Ltd. Brand product names are registered trademarks or trademarks of their respective companies.